



Cultural Resources Capabilities

KEY STAFF

Ryan A. Rowles, M.A., RPA
Cultural Resources
Department Manager
20 years experience

Frank Vento, Ph.D.
PG-001831-G
Geoarchaeologist /
Geomorphologist
38 years experience

Laura C. Ricketts, M.A.
Senior Architectural Historian
24 years experience

**Jessica L.S. Schumer,
M.A., RPA**
Senior Archaeologist
17 years experience

Karen Reed
WV Project Manager
14 years experience



Ligonier, PA
Canonsburg, PA
724.238.4138

Charleston, WV
304.223.5205

www.markosky.com

At Markosky, our archaeologists and architectural historians take pride in walking you through the Section 106 process. Our foresight and thoughtful solutions effectively and painlessly accomplish your projects. Our Cultural Resource services include geomorphological surveys, phased archaeological investigations, above ground historic structures evaluations, findings of eligibility and effect and any other associated Section 106 work.

ARCHAEOLOGY KEY SERVICES

- Phase I, II, and III Archaeological Investigations
- Resource Identification and Planning
- Determinations of Eligibility and Effect
- Archaeological Monitoring
- Geomorphological Investigations
- Geophysical Investigations (GPR, Resistivity, Magnetometer)
- Historic Grave Identification
- Curation Standards and Methods
- Consulting Party Coordination
- Avoidance Alternatives
- Agreement Documents
- Alternative Mitigation
- Historic Research
- Section 106 Training/ Seminars

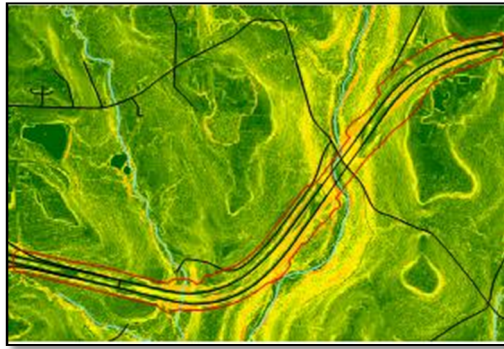
HISTORIC STRUCTURES KEY SERVICES

- Resource Identification
- Historic Structures Reconnaissance Surveys
- Constraints Mapping
- Historic Contexts and Background Research
- Eligibility Studies for Individual Resources and Historic Districts
- Historic Bridge Rehabilitation (Feasibility) Analyses
- Determination of Effects
- Resolution of Adverse Effects
- Creative Mitigation Measures
- Agreement Documents
- Consulting Party Coordination
- Public Outreach
- National Register Nominations
- Historic Structures Inventories
- Section 4(f) Documentation for Historic Properties

COLLABORATIVE ENGINEERING

WVUCP DBE (WBE): C04725-00 | CAGE: 50GY5 | NAICS Codes: 541330, 541620, 23711, 541720, 541990

Archaeology
SR 0080, Section 365
I-80 Canoe Creek
Bridges
PennDOT District 10-0
Clarion County



Markosky completed a cultural resources constraints study and mapping, for both archaeology and historic structures. Through background research, GIS analyses, and field reconnaissance, Markosky identified potential cultural resources to assist project design.

Archaeology
SR 0281, Section 023
Gilmore to Welsh
Hill Road
PennDOT District 9-0
Somerset County



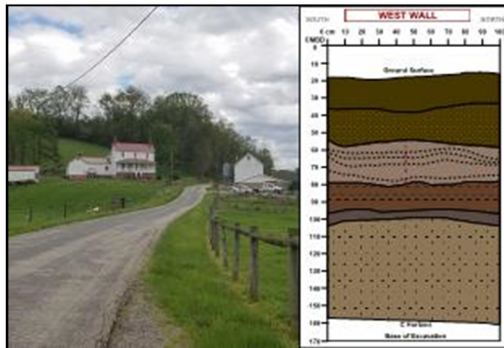
Markosky conducted a geophysical survey using ground penetrating radar and electrical resistivity that identified anomalies in a planned road cut adjacent to a historic cemetery. Phase I archaeology then verified these as unmarked grave shafts and also identified a historic site. Markosky assisted the District with project planning and coordination to create a Plan of Action for Phase II. Markosky wrote a Summary Report to expedite SHPO concurrence and move forward grave shaft excavations before construction. A qualified archaeologist then monitored during construction to verify that no human remains were disturbed.

Historic Structures
SR 4009, Section B01
Watts Mill Bridge
PennDOT District 11-0
Beaver County



Markosky developed the project Purpose and Need for this historic Pratt pony truss bridge at PennDOT's direction. We identified and coordinated with consulting parties to determine whether the structure could be preserved as a pedestrian bridge, and then assessed the potential effects of various project options including preservation in place, the marketing of the historic bridge, or its removal.

Cross-Discipline
Collaboration
SR 3041, Section A10
SR 3041 over Short Creek
PennDOT District 12-0
Washington County



PennDOT directed Markosky to evaluate not only the National Register eligibility of the adjacent mid-19th century farm, but also the potential for the surrounding properties to constitute an eligible Rural Historic District. In addition, Markosky conducted geomorphological and archaeological investigations along Short Creek. The geomorphological study determined the ages of soils and landforms, while also helping to refine the methods of Phase IB archaeological investigations at a prehistoric archaeological site to



Our TEAM Approach

- T**ECHNOLOGY Advanced Analytics and Modeling
- E**XPERTISE Experienced and Certified Professionals
- A**GILITY Flexible & Responsive
- M**ANAGEMENT Collaborative Project Management